



Release Notes

Leaf RAW Converter version 1.2

Copyright

© Kodak, 2007. All rights reserved.

Kodak, Creo, and Leaf are trademarks of Kodak.

Acrobat, Adobe, Distiller, Illustrator, PageMaker, Photoshop, and PostScript are trademarks of Adobe Systems Incorporated.

Apple, AppleShare, AppleTalk, iMac, ImageWriter, LaserWriter, Mac OS, Power Macintosh, and TrueType are registered trademarks of Apple Computer, Inc. Macintosh is a trademark of Apple Computer, Inc., registered in the U.S.A. and other countries.

Hexachrome, PANTONE, PANTONE Hexachrome, and PANTONE MATCHING SYSTEM are the property of Pantone, Inc.

PEARL, PEARLdry, PEARLgold, PEARLhdp, and PEARLsetter are registered trademarks of Presstek, Inc.

XEROX is a trademark of XEROX CORPORATION.

<http://graphics.kodak.com/>

Internal 734-00493B-EN Rev A

Revised 19 July 2007

Contents

Overview..... 1

What's new in this version 1

Using the Leaf RAW Converter 2

Overview

When shooting images using the compressed mode on Leaf[®] Aptus and Leaf Aptus S digital camera backs, the files are saved in an intermediate, non-standard compressed format. The Leaf RAW Converter enables you to convert these non-standard compressed files to a standard Leaf format which can be read by other applications such as the Adobe[®] Photoshop[®] Camera RAW plug-in. The converted files can be saved in standard compressed or uncompressed form. The Leaf RAW Converter can also be used to convert uncompressed files to standard compressed format and vice versa.

The Leaf Raw Converter is available in Macintosh[®] and Windows[®] versions. The following procedure holds for both versions. The graphic user interface may differ slightly.

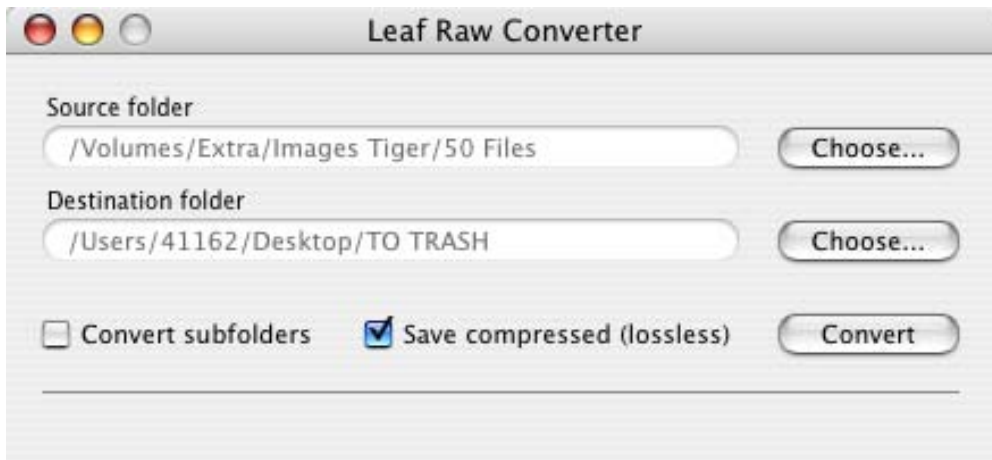
What's new in this version

This version of the Leaf RAW Converter supports Leaf Aptus S digital camera backs.

Using the Leaf RAW Converter

The following procedure describes a typical workflow for converting files captured on the Leaf Aptus or Aptus S camera back in compressed mode from intermediate format to standard format.

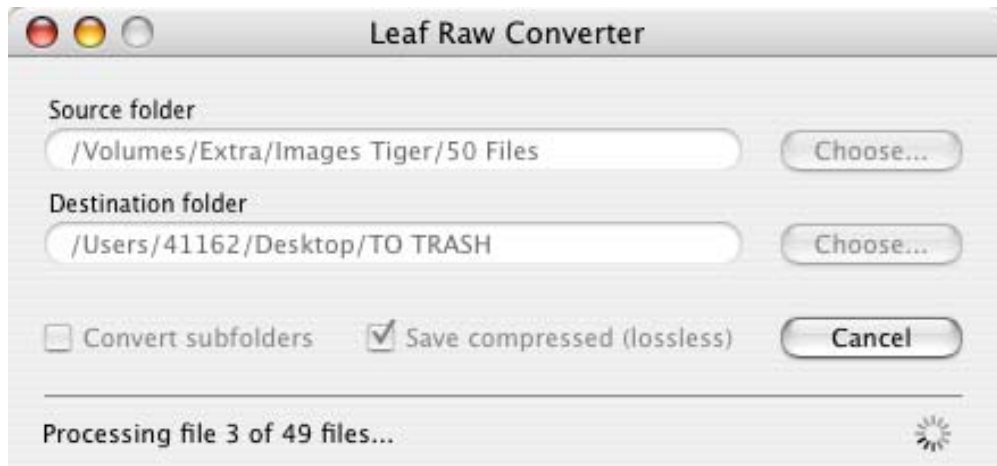
1. Install Leaf RAW Converter on your computer.
2. Copy the files from the CF card or digital magazine to your hard disk. Place the files in one folder or in subfolders under a single folder.
3. Open the Leaf RAW Converter.



4. In the **Source folder** area, click **Choose** and locate the folder containing the files that you want to convert. If the files are arranged in subfolders, select the folder that contains those subfolders.
5. In the **Destination folder** area, click **Choose** and locate the folder in which to place the converted files.
6. If your source files are arranged in subfolders, select the **Convert subfolders** check box. The same subfolder structure will be created in the destination folder,
7. If you want to compress the files, select the **Save compressed** check box.

8. Click **Convert**.

The images are converted.



Note: Files with the same name as a file already in the destination folder are not converted. Ensure that the destination folder does not contain files with the same name as any source file.

To convert uncompressed files to standard compressed format and vice versa, perform steps 3-8 above while selecting the desired target state in the **Save compressed** check box.