

Maximize your images as you shoot

Once the days shoot is all set and “locked down” you are ready to shoot, you can hide the function area to increase the area in which you view the thumbnails and previews. It is simple to hide the function area and just as easy to return to function area. With Leaf Capture you are always a click away from being able to check the histogram and access the rest of the features in Leaf Capture while at the same time view your work as large as possible.

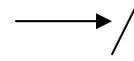
To hide the functions area:

In the **View** menu, select **Hide Functions Area**.

To show the functions area:

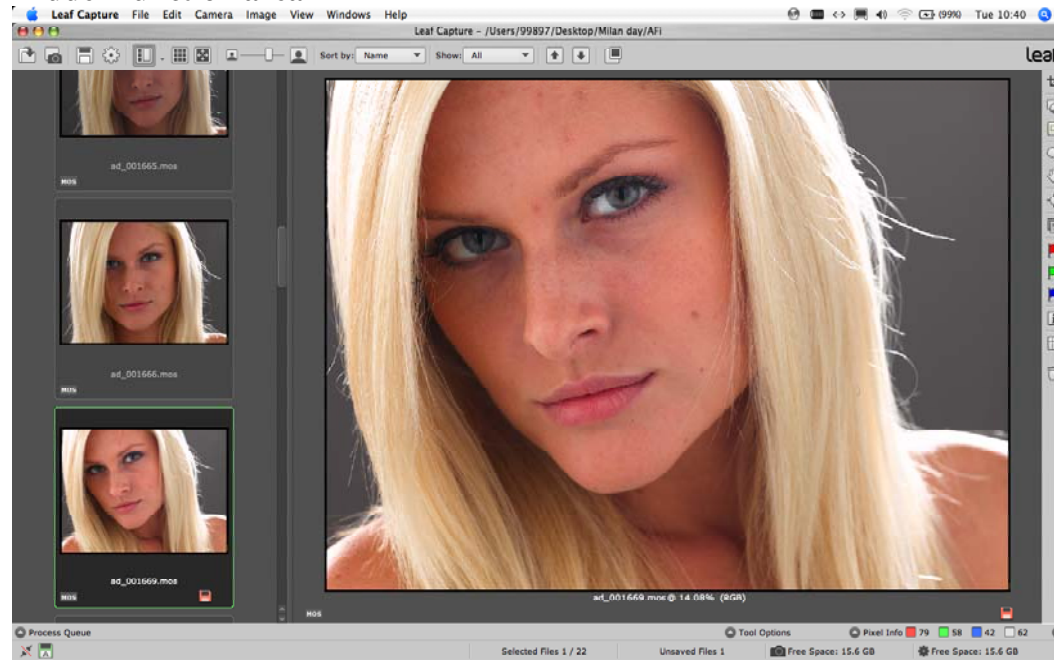
In the **View** menu, select **Show Functions Area**.

Or use the short cut key:



*With a MacBook Pro the short cut key would be “tab”

Hidden function area



Not hidden function area:

